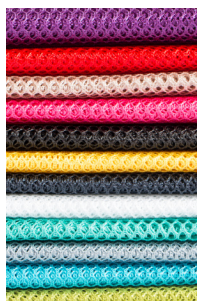


Open Wide

PBA246



Soft and Stable®
One 12½" x 26" piece
*Recommend: ½ yard
package, SS1018 or
SS2018*



Lightweight Mesh
One 11" x 14" piece
*Recommend: ½ yard
package, SUP209-XXX
(12 colors)*



Fusible Interfacing
One 4" x 10½" piece
*Recommend: Your
favorite vendor*



Fold-Over Elastic
Two 11" piece
*Recommend: 2 yard
package, SUP206-2-XXX
(12 colors)*



Handbag Zippers
One 24" Single Slide
Recommend: ZIP24-XXX

Fabric Requirements:
½ yard for Main
½ yard for Lining
½ yard for Contrasting



Open Wide Finishing Kit Recipe

Kit includes everything (except fabric and thread) to make ONE medium case

PBA246FK-MED- APPLE GREEN
 ATOM RED
 BLACK
 DANDELION
 LIPSTICK
 NATURAL
 NAVY
 PARROT BLUE
 PEWTER
 TAHITI
 TURQUOISE
 WHITE

Kit includes:	SKU (for ordering from ByAnnie.com)	Put in kit: Suggestions for cutting	Suggestions for kit assembly:
ByAnnie's Soft and Stable®	SS2015	One 12½" x 26" piece <i>From 58" wide Soft and Stable, cut a 12½" strip (to make enough for two kits).</i> <i>Then subcut that strip into TWO 12½" x 26" pieces.</i> <i>Use scraps to cut pieces for Mini Notebook Kits or other small projects.</i>	Fold in half lengthwise to 6¼" x 26". Fold ends in to middle to make piece about 6¼" x 11". Insert into 9" x 12" bag with fold to left side of bag leaving room for zipper on right side of bag.
Mesh, lightweight <i>COLOR TO MATCH KIT COLOR</i>	SUP209-xxx (color name) or SUP209-15YD-xxx (color name)	One 14" x 11" piece <i>From 15-yd roll, cut a 14" x 54" strip (to make enough for four kits).</i> <i>Then subcut each strip into FOUR 14" x 11" pieces</i>	Fold ends in to back (roughly in thirds) to about 5" x 11". Put on top of Soft and Stable.
Interfacing, fusible <i>(We prefer ShapeFlex SF101)</i>	SUP179	One 4" x 10½" piece <i>From 20"-wide fusible interfacing, cut a 10½" strip (to make enough for five kits).</i> <i>Then subcut strip into FIVE 4" x 10½" pieces.</i>	Put on top of mesh.
Fold-over elastic, 5/8"	SUP206-2-xxx (color name)	Two 11" strips <i>—color to match or contrast with mesh</i>	Put on top of fusible interfacing.
Handbag zipper, 24"	ZIP24-xxx (color name)	One 24" zipper <i>—color to match or contrast mesh and fold-over elastic</i>	Fold in half and put on right side of package.

OPEN WIDE!

Quick and fun to make, these handy zippered bags in three sizes open wide for easy access to all your supplies. Binding on the easy-to-install zipper finishes the upper edges and forms a handle and grab tab. Two inner mesh pockets keep things organized and easy to view.

Slip these classy bags in your suitcase — or use them to maximize the space on your vanity. Be sure to make a few to have on hand for gifts. Who wouldn't love a cute bag for cosmetics or other supplies?

Supplies needed:	Small (4"H x 7½"W x 3"D)	Medium (6½"H x 10½"W x 4½"D)	Large (9"H x 12"W x 6"D)
Main fabric (body of bags) Avoid directional fabrics until you are familiar with the process.	Fat quarter	½ yard	½ yard
Lining fabric (lining of bags)	Fat quarter	½ yard	½ yard
Contrasting fabric (border and bindings)	½ yard	½ yard	½ yard
ByAnnie's Soft and Stable* (stabilizer for bags)	9½" x 17"	12½" x 26"	14" x 35"
OPTIONAL: Mesh fabric, light- or midweight (inner pockets)	9" x 8"	14" x 11"	20½" x 12½"
OPTIONAL: Fold-over elastic, 5/8" wide (binding for mesh pockets)	16"	22"	25"
Handbag zipper**	11" or longer	15" or longer	18" or longer
Suggested threads — We love Superior Threads' threads!	SoFine #50 for quilting and assembly www.superiorthreads.com		

*ByAnnie's Soft & Stable™, mesh, handbag zippers, fold-over elastic, and finishing kits are available at www.ByAnnie.com. One 36" x 58" package of Soft and Stable will make all three bags.

**We prefer handbag zippers because they have a wider tape, extra-large slide, and are made of nylon so they are sturdy zip after zip yet easy to cut and sew through. One 30" double-slide handbag zipper can be used to make the zippers for both the small and the medium bag. Use a 24" single-slide handbag zipper to make the zipper for the large bag.

Special thanks to Andover Fabrics for the fabrics used on the cover samples. Ask for their Garden Square line of fabrics at your local quilt shop.

PBA246



ByAnnie.com LLC
P. O. Box 1003 • St. George, UT 84771
435-674-9816 • info@byannie.com
www.byannie.com

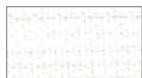


© 2015 ByAnnie.com LLC
All Rights Reserved

ZIPPER COLOR CHART

• Wide zipper tape for easy insertion • Soft, flexible, easy to sew through
• Strong and durable zip after zip • Extra-long zipper pull • Perfect for purses, bags and more

100 White*



140 Seal Brown*



195 Dandelion*



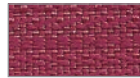
210 Twilight



235 Navy*



258 Wild Plum*



102 Ivory*



145 Sable*



196 Butter Cream



212 Turquoise*



240 Eggplant*



260 Atom Red*



105 Black*



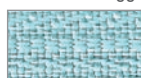
150 Sage



198 Chartreuse*



213 Robin's Egg*



245 Tahiti*



265 Hot Red*



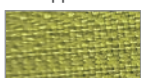
110 Pewter*



152 Taupe



200 Apple Green*



214 Parrot Blue*



247 Dusty Rose



270 Cranberry



115 Gunmetal*



160 Khaki



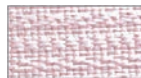
201 Light Mint



215 Blastoff Blue*



249 Pale Pink



280 Redwood



120 Slate Gray*



170 Golden Brown



203 Jewel Green



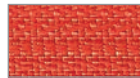
220 Country Blue*



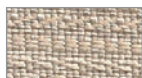
250 Lipstick*



285 Tangerine*



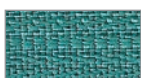
130 Natural*



180 Gold



204 Emerald*



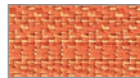
225 Cobalt*



252 Raspberry*



287 Pumpkin*



135 Rock Slide



190 Buttercup*



205 Hemlock



230 Union Blue



255 Crazy Plum*



290 Papaya*



#4.5 nylon-coil handbag zippers are perfect for bags and more and are now available in 4 styles:

- 24" single-slide, available in all 48 colors
- 30" double-slide, available in all 48 colors
- 40" double-slide, available in 32 colors*
- Zippers by the Yard (4 yards of zipper chain with 16 pulls), available in 32 colors*
- Also individual extra-long zipper pulls available in all 48 colors

(Actual size)



No Minimum Order Requirements



by **annie**.com
... what's in your bag?

Purse Parts™
Handbag Zippers and Hardware

patterns™
by annie

by **annie**
STABLE