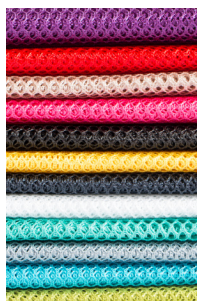


Power Trip

PBA237



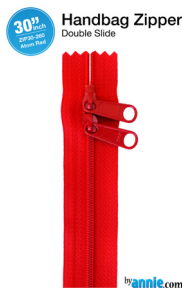
Soft and Stable®
One 18" x 58" piece
*Recommend: ½ yard
package, SS1018 or
SS2018*



Lightweight Mesh
One 12" x 13" piece
*Recommend: ½ yard
package, SUP209-XXX
(12 colors)*



Fold-Over Elastic
One 21" piece
*Recommend: 2 yard
package, SUP206-2-XXX
(12 colors)*



Handbag Zippers
One 30" Double Slide +
One 40" Double Slide!
*Recommend:
ZIP30-XXX, ZIP40-XXX*



Elastic - ¼"
One 10½" piece
*Recommend: Your
favorite vendor*

Fabric Requirements:
¾ yard for Main
¾ yard for Lining
½ yard for Contrasting



Power Trip Finishing Kit Recipe

Kit includes:	SKU (for ordering from ByAnnie.com)	Put in kit: Suggestions for cutting	Suggestions for kit assembly:
ByAnnie's Soft and Stable®	SS2018	<i>Customers can purchase a 1/2-yard (18" x 58") package of Soft and Stable</i>	
Mesh, lightweight	SUP209-xxx (color name) or SUP209-15YD-xxx (color name)	One 12" x 13" piece	Fold to size desired and put in bag.
Fold-over elastic, 5/8"	SUP206-2-xxx (color name)	One 21" piece	Fold elastic to neatly fit inside bag.
Elastic, 3/4"	Order from supplier of your choice	One 10 1/2" piece	Fold elastic to neatly fit inside bag.
Handbag zippers. 30" and 40"	ZIP30-xxx (color name) ZIP40-xxx (color name)	One 30" zipper and One 40" zipper <i>—color to match or contrast mesh and fold-over elastic</i>	Fold zippers in half and place with other items in bag.

Power Trip

You're sure to find many uses for this versatile organizer. From chargers and cords to first aid supplies for an emergency auto kit, the compact case will organize an abundance of items.

A padded handle makes transport easy and a full zippered closure allows the case to open to lie flat. Elastic attachment loops and plenty of pockets keep everything in easy reach. Gusseted mesh pockets provide good visibility and access. Two padded zippered pockets on the inside are perfect for an iPad mini or electronic reader.

ByAnnie's Soft and Stable gives good body and stability to the case plus extra protection for your gear.

Supplies needed:	Power Trip (7½"H x 10"W x 3"D)
Main fabric (body of case, pockets)	¾ yard
Lining fabric (lining of case and pockets)	¾ yard
Contrasting fabric (bindings, handle, zipper pulls)	½ yard
ByAnnie's Soft & Stable™* (stabilizer for case)	18" x 58" (SS1018/SS2018)
Mesh fabric* for inner pockets (medium-weight preferred, but lightweight will also work)	12" x 13"
Zippers to match fabric* (I prefer to use heavy-duty handbag zippers. A double-slide zipper is great for the outer zipper. TIP: Cut a double-slide zipper into two single-slide zippers for the inner pockets.)	One 10" (or longer), two 12" (or longer), and one 30" double-slide zipper
¾" elastic	10½"
5/8" fold-over elastic	21"
Thread to complement main fabric (I use and recommend Superior Threads: www.superiorthreads.com)	SoFine™ or King Tut™ by Superior Threads

***ByAnnie's Soft & Stable™, supplies, finishing kits, and tools are available at www.ByAnnie.com.**

PBA237

Special thanks to Andover Fabrics for the striking fabrics used for the cover sample. Ask for Ex Libris by Alison Glass at your local quilt shop. Hugs, too, to Joyce at Sugar Plum Sewing (joyplumbum@yahoo.com) for her expert quilting and quick service!



ByAnnie.com LLC
P. O. Box 1003 • St. George, UT 84771
435-674-9816 • info@byannie.com
www.byannie.com

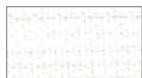


© 2015 ByAnnie.com LLC
All Rights Reserved

ZIPPER COLOR CHART

• Wide zipper tape for easy insertion • Soft, flexible, easy to sew through
• Strong and durable zip after zip • Extra-long zipper pull • Perfect for purses, bags and more

100 White*



140 Seal Brown*



195 Dandelion*



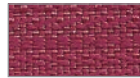
210 Twilight



235 Navy*



258 Wild Plum*



102 Ivory*



145 Sable*



196 Butter Cream



212 Turquoise*



240 Eggplant*



260 Atom Red*



105 Black*



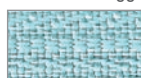
150 Sage



198 Chartreuse*



213 Robin's Egg*



245 Tahiti*



265 Hot Red*



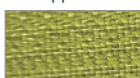
110 Pewter*



152 Taupe



200 Apple Green*



214 Parrot Blue*



247 Dusty Rose



270 Cranberry



115 Gunmetal*



160 Khaki



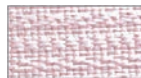
201 Light Mint



215 Blastoff Blue*



249 Pale Pink



280 Redwood



120 Slate Gray*



170 Golden Brown



203 Jewel Green



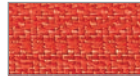
220 Country Blue*



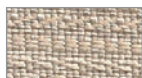
250 Lipstick*



285 Tangerine*



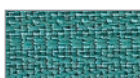
130 Natural*



180 Gold



204 Emerald*



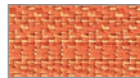
225 Cobalt*



252 Raspberry*



287 Pumpkin*



135 Rock Slide



190 Buttercup*



205 Hemlock



230 Union Blue



255 Crazy Plum*



290 Papaya*



#4.5 nylon-coil handbag zippers are perfect for bags and more and are now available in 4 styles:

- 24" single-slide, available in all 48 colors
- 30" double-slide, available in all 48 colors
- 40" double-slide, available in 32 colors*
- Zippers by the Yard (4 yards of zipper chain with 16 pulls), available in 32 colors*
- Also individual extra-long zipper pulls available in all 48 colors

(Actual size)



No Minimum Order Requirements



by **annie**.com
... what's in your bag?

Purse Parts™
Handbag Zippers and Hardware

patterns™
by annie

by **annie**
STABLE