

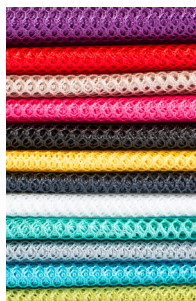
All Aboard

PBA244

Measurements shown are for medium-sized bag.
See Finishing Kit Recipe and supply list for more details.



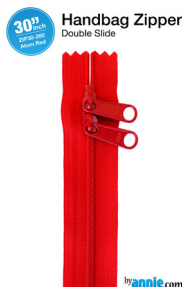
Soft and Stable®
One 9" x 58" piece
Recommend: ½ yard package, SS1018 or SS2018



Lightweight Mesh
One 10" x 12" piece
Recommend: ½ yard package, SUP209-XXX (12 colors)



Fold-Over Elastic
One 15" piece
Recommend: 2 yard package, SUP206-2-XXX (12 colors)



Handbag Zippers
One 30" Double Slide
Recommend: ZIP30-XXX

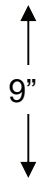
Fabric Requirements:
½ yard for Main
½ yard for Coordinating
Fat Quarter for Contrasting



All Aboard Finishing Kit Recipe

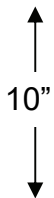
Kit includes everything (except fabric and thread) to make one MEDIUM case:

ByAnnie's Soft and Stable	Cut from SS1015 (black) or SS2015 (white)	9" x 58"
5/8" fold-over elastic	SUP206W	15"
Mesh	SUP209-xxx	10" x 12"
Zippers	ZIP30-xxx	One 30" double-slide zipper 1



SOFT AND STABLE:

From 58" Soft and Stable, cut one 9" strip for each kit.



MESH FABRIC:

From 54" mesh, cut a 10" strip;
subcut into 12" pieces
— should get 4 per strip.

All Aboard! Train Case Trio

Take beauty on the go and look stylish while doing so!

Train cases are a great way to organize and carry your favorite beauty products, first aid needs, or other supplies.

ByAnnie's Soft and Stable gives the cases great body and stability. Interior mesh pockets afford easy access to small items such as jewelry, lipsticks, and more.

Fun and quick to make, these cases are perfect for gift-giving, too!

Supplies needed:	Small 5½"W x 8½"L x 2¾"H	Medium 6½"D x 9½"L x 4"H	Large 7½"D x 10½"L x 6½"H
Main fabric (body of cases)	1/2 yard	1/2 yard	5/8 yard
Coordinating fabric (linings)	1/2 yard	1/2 yard	5/8 yard
Contrasting fabric (handle, bindings, and zipper pull)	Fat quarter	Fat quarter	Fat quarter
Soft & Stable™* (stabilizer for cases)	7" x 58"	9" x 58"	19" x 39"
Mesh fabric, light-weight*or medium-weight* (inner pockets)	8" x 10"	10" x 12"	14" x 12"
Handbag zipper* We prefer handbag zippers because they have a wider tape, extra-large pull and are made of nylon so they are sturdy zip after zip yet easy to cut and sew through.	One 30"* double-slide handbag zipper	One 30"* double-slide handbag zipper	One 30"* double-slide handbag zipper
5/8" fold-over elastic* (bindings for pockets)	14"	15"	18"
Plaskolite, foam core, or heavy cardboard (base stabilizer)	5¼" x 6¼"	6¼" x 7¼"	7¼" x 8¼"

*Soft & Stable™, mesh, handbag zippers, fold-over elastic, and finishing kits are available at www.ByAnnie.com. One 36" x 58" package of Soft and Stable will make all three train cases.

Special thanks to Timeless Treasures (tffabrics.com) for the happy fabrics used on the cover samples. Ask for their Tribeca—Claire line of fabrics at your local quilt shop.

Hugs, too, to Joyce at Sugar Plum Sewing for quilting the fabrics. Appreciate you!



PBA244



ByAnnie.com LLC
P. O. Box 1003 • St. George, UT 84771
435-674-9816 • info@byannie.com
www.byannie.com

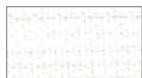


© 2015 ByAnnie.com LLC
All Rights Reserved

ZIPPER COLOR CHART

• Wide zipper tape for easy insertion • Soft, flexible, easy to sew through
• Strong and durable zip after zip • Extra-long zipper pull • Perfect for purses, bags and more

100 White*



140 Seal Brown*



195 Dandelion*



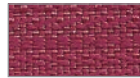
210 Twilight



235 Navy*



258 Wild Plum*



102 Ivory*



145 Sable*



196 Butter Cream



212 Turquoise*



240 Eggplant*



260 Atom Red*



105 Black*



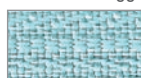
150 Sage



198 Chartreuse*



213 Robin's Egg*



245 Tahiti*



265 Hot Red*



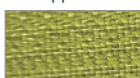
110 Pewter*



152 Taupe



200 Apple Green*



214 Parrot Blue*



247 Dusty Rose



270 Cranberry



115 Gunmetal*



160 Khaki



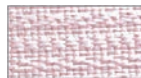
201 Light Mint



215 Blastoff Blue*



249 Pale Pink



280 Redwood



120 Slate Gray*



170 Golden Brown



203 Jewel Green



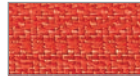
220 Country Blue*



250 Lipstick*



285 Tangerine*



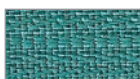
130 Natural*



180 Gold



204 Emerald*



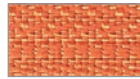
225 Cobalt*



252 Raspberry*



287 Pumpkin*



135 Rock Slide



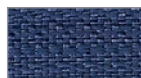
190 Buttercup*



205 Hemlock



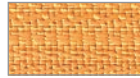
230 Union Blue



255 Crazy Plum*



290 Papaya*



#4.5 nylon-coil handbag zippers are perfect for bags and more and are now available in 4 styles:

- 24" single-slide, available in all 48 colors
- 30" double-slide, available in all 48 colors
- 40" double-slide, available in 32 colors*
- Zippers by the Yard (4 yards of zipper chain with 16 pulls), available in 32 colors*
- Also individual extra-long zipper pulls available in all 48 colors

(Actual size)



No Minimum Order Requirements



by **annie**.com
... what's in your bag?

Purse Parts™
Handbag Zippers and Hardware

patterns™
by annie

by **annie**
STABLE